



o v e s c o
innovation in scope



OTSC[®] Proctology.....

The OTSC[®] for proctology



OTSC® is also available for proctology. The use of the OTSC® clip is an established method for the treatment of fistulas and anastomotic leaks in the gastrointestinal tract.

- Simple transanal clip application
- Fast and minimally invasive surgical intervention
- Sphincter-preserving closure of anorectal fistulas¹
- No delayed suture loosening or suture rupture
- High clinical effectiveness^{1,2}

..... OTSC® Proctology

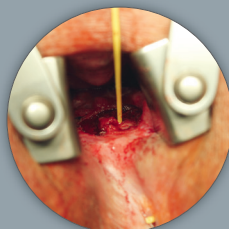
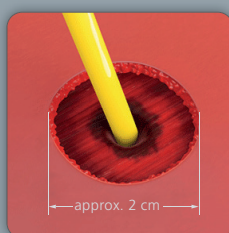
The OTSC® for proctology

The OTSC® Proctology is an innovative clip system that can be applied in proctology procedures. The clip is used to treat wall lesions in the anorectum (e.g. fistulas) and combines outstanding advantages:

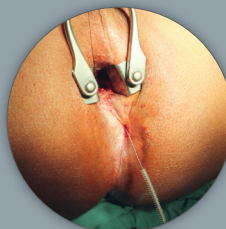
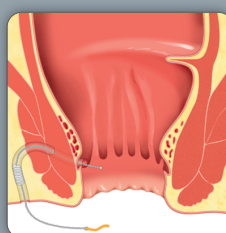
- High compression force at the lesion
- Reliable positioning through collection of a large tissue area
- Dynamic compression and thus permanent adaptation to the tissue thickness
- Preservation of the compressed tissue

..... Use

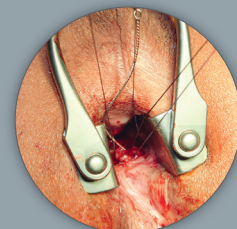
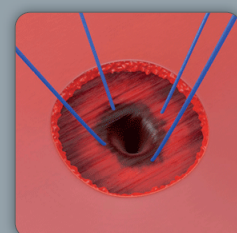
Preparation of the fistula tract and the application site³



After healing of the inflammatory phase by means of a thread drainage, the sensitive anoderm around the inner fistula opening is cut out circularly. This enables a reliable positioning of the clip in the tissue.



For optimal preparation, debridement and removal of granulated tissue along the fistula tract is done using the Fistula Brush.



The application of supporting threads crosswise through the sphincter at the application site ensures a safe and precise placement of the application cap.

1 Dango, S., Antonakis, F., Schrader, D., Radzikhovskiy, A., Ghadimi, M. B., & Hesterberg, R. **Long-term efficacy and safety of a nitinol closure clip system for anal fistula treatment.** Minimally Invasive Therapy & Allied Technologies 2017, 26(4), 227-231.

2 Prosst, R. L., & Joos, A. K. **Short-term outcomes of a novel endoscopic clipping device for closure of the internal opening in 100 anorectal fistulas.** Techniques in coloproctology 2016, 20(11), 753-758.

3 **Treatment of an anorectal fistula.** Source: Prof. Dr. R. ProBt, Proctological Institute Stuttgart, Germany.

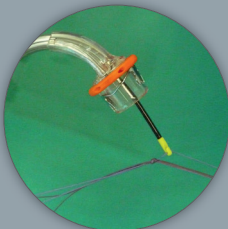
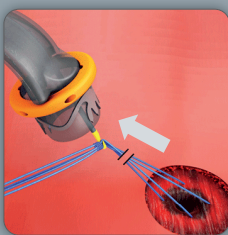


The exceptional features and therapeutic functions of the OTSC® Proctology are based on its unique material and design: the superelastic Nitinol® is biocompatible, MRI conditional, and, if needed, even suited to be applied as a long-term implant. The handling of the OTSC® Proctology is intuitive and easy to learn.

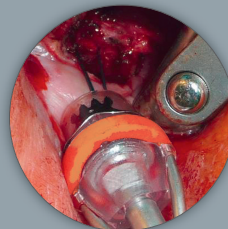
For precise closure of the lesion, either pre-applied supporting threads or the OTSC® Proctology Anchor can be used (inserted through the working channel of the applicator).

All OTSC® Proctology products are intended for single use.

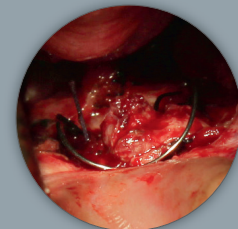
Application of the clip and closure of the fistula³



The free thread ends are knotted and pulled through the working channel of the instrument with the help of the pre-applied thread retriever.



The cap is placed centrally on the fistula opening at the desired position. By pulling the trigger, the clip is applied into the tissue.



The clip grasps the muscle tissue of the sphincter and closes the fistula. The rounded design of the clip allows for an irritation-free positioning in the anal canal.

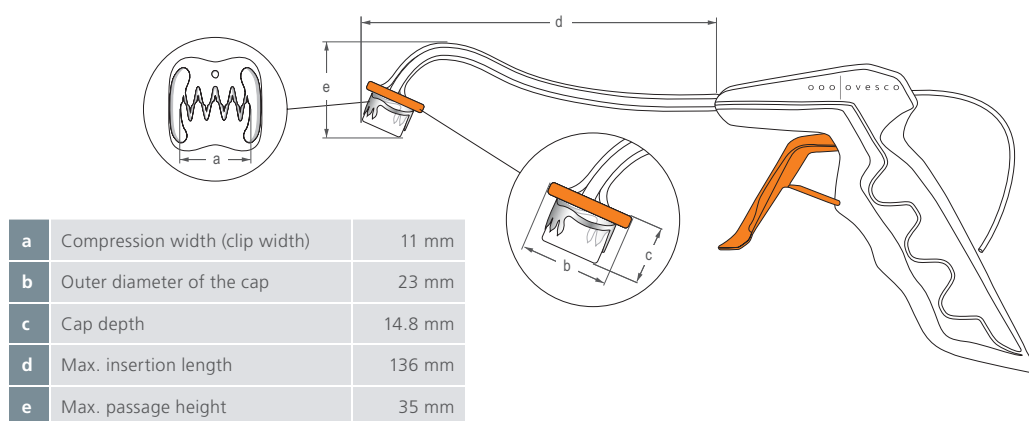
..... OTSC® Proctology

Details and components



The OTSC® Proctology consists of the applicator with release mechanism and preloaded clip, as well as the thread retriever located in the working channel of the instrument.

After preparing the application site, the applicator is inserted transanally under direct vision. By pulling the trigger, the clip is pushed off the application cap and released into the tissue.



Application aid

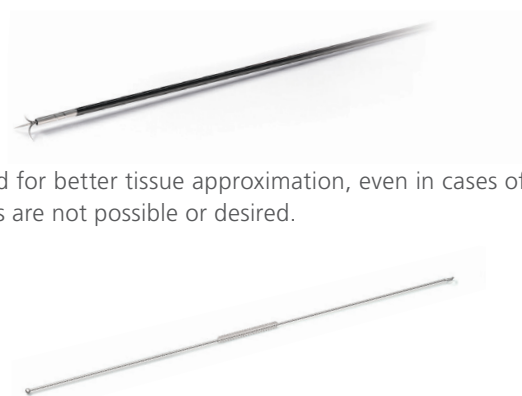
Various application aids are available for a more effective preparation of the fistula tract and application of the clip.



The OTSC® Proctology Anchor is used for better tissue approximation, even in cases of scarred alterations or when U-sutures are not possible or desired.



The Fistula Brush is used to probe the fistula canal, to clean the fistula tract and to abrade the fistula epithelium. It consists of a semi-flexible wire with a brush section in the middle, an eyelet at one end and a probing olive at the other end.



Ovesco Endoscopy AG

Friedrich-Miescher-Strasse 9
72076 Tuebingen
Germany

Phone +49 (0) 7071 96528-160
Fax +49 (0) 7071 96528-260
E-Mail service@ovesco.com

Ovesco Endoscopy USA Inc.

15300 Weston Parkway
Suite 101
Cary, NC 27513,
USA

Phone +1 919 651 9449
Fax +1 408 608 2077
customerservice@ovesco-usa.com

Scan here for more
product information.



Ovesco Endoscopy AG is a medical device company specialising in the fields of flexible endoscopy, endoluminal surgery and telemetric diagnostics. The company develops, manufactures and markets innovative products for the detection and treatment of gastrointestinal disease. Ovesco products are synonymous with efficacy and efficient application.

www.ovesco.com

CE0297

English version 7 | 2025-01-31