



NEW
DESIGN

stentFIX System

Preventing stent migration^{1,2}

- Clip design for optimized wall adaptation
- Allows proximal and distal fixation
- Dedicated cap shape for easy positioning



stentFIX System

Optimized and simple stent fixation


The stentFIX system is an innovative solution for securely fixing metal stents (SEMS) and lumen-apposing metal stents (LAMS) in the digestive tract. The rounded design of the stentFIX clip adapts perfectly to the gastrointestinal anatomy. The specially designed cap allows easy positioning on the stent edge, enabling the clip to optimally engage the stent mesh and tissue.

The optimized design includes a blue ring that provides visual confirmation of clip application and prevents the clip from twisting on the cap during assembly. The larger surface area of the hand wheel also improves grip during application.

Thanks to its compact design, the stentFIX System can also be used with stents from Ø 18 mm, allowing fixation at both the proximal and distal stent edges, depending on the location.



Technical specifications

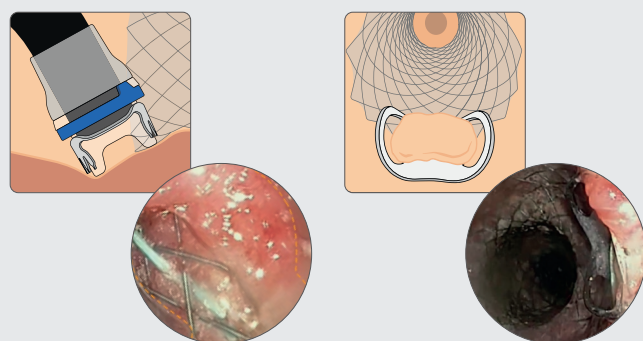
 STENTFIX SYSTEM	Thread length [mm]	Depth of cap [mm]	Compatible working channel diameter Ø [mm]	Compatible endoscope diameter Ø [mm]	Max. outer diameter Ø [mm]	Ref.N°.
stentFIX System	1650	7	2.8	8.5–11	15.9	100.50n

1 Bronswijk M, Gökce E, Hindryckx P, Van der Merwe S. Single-session endoscopic ultrasound-directed transgastric endoscopic retrograde cholangiopancreatography with a dedicated over-the-scope fixation device: Feasibility study (with video). Dig Endosc. 2025 Feb;37(2):176-182.

2 Mehta A, Ashhab A, Shrigiriwar A, Assefa R, Canakis A, Frohlinger M, Bouvette CA, Matus G, Punkenhofer P, Mandarino FV, Azzolini F, Samaan JS, Advani R, Desai SK, Confer B, Sangwan VK, Pineda-Bonilla JJ, Lee DP, Modi K, Eke C, Schiemer M, Rondini E, Dolak W, Agarunov E, Duku M, Telese A, Pawa R, Pawa S, Velasco NZ, Farha J, Berrien-Lopez R, Abu S, McLean-Powell CK, Kim RE, Rumman A, Spaun GO, Arcidiacono PG, Park KH, Khara HS, Diehl DL, Kedia P, Kuellmer A, Manta R, Gonda TA, Sehgal V, Haidry R, Khashab MA. Evaluating no fixation, endoscopic suture fixation, and an over-the-scope clip for anchoring fully covered self-expanding metal stents in benign upper gastrointestinal conditions: a comparative multicenter international study (With Video). Gastrointest Endosc. 2025 Mar;101(3):589-597.

Application example

Proximal fixation of the stent³



Align the teeth of the clip parallel to the stent opening; position 1/3 on the stent mesh and 2/3 on the tissue. Mobilize the tissue by suction.

Optimal adaptation of the clip to the wall.



Scan here for the application video!

3 Dr. Massimo Conio, Sanremo Hospital, Italy



Ovesco Endoscopy AG

Friedrich-Miescher-Str. 9 | D-72076 Tuebingen
+49 (0) 7071 96528-160 | service@ovesco.com

www.ovesco.com

Ovesco Endoscopy USA Inc.

15300 Weston Parkway, Suite 101 | Cary, NC 27513 | Phone: +1 919 651 9449
Fax: +1 408 608 2077 | customerservice@ovesco-usa.com

www.ovesco.com

